


Stainless steel

TECHNICAL DATA

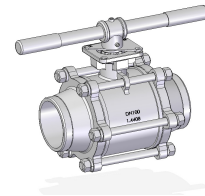
operating temperature:	-20°C to max. +180°C, dependent on pressure
working pressure:	max. PN 64 bar
actuator connection :	according ISO 5211
body material :	stainless steel 1.4408 - CF8M
welding-ends :	stainless steel 1.4408 - CF8M
ball :	stainless steel 1.4408 - CF8M
ball seal :	PTFE TFM 1600
stem :	stainless steel 1.4401
stem seals :	PTFE / FKM
licensing :	 94/9/EG ATEX
security :	TA-Luft construction
case wall strengths :	blow-out proof stem, antistatik construction
inspection and test :	according EN 12516-3
lever :	API 598, EN 12266
locking flap :	stainless steel 1.4401 with drilling for padlock
	stainless steel 1.4401



8.122

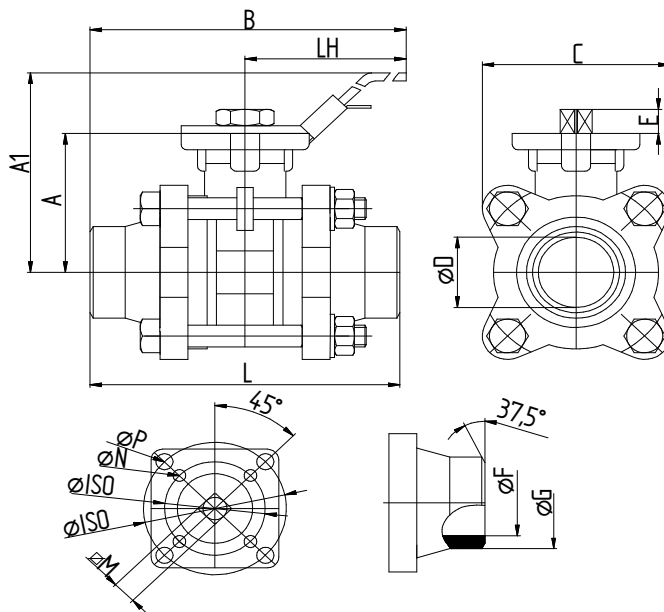


8.122G



DN100

Welded connections



art.nr.	DN	øD mm	L mm	ø F mm	ø G mm	C mm	A mm	A1 mm	LH mm	M mm	E mm	ø ISO	øP/Nmm	PN bar
8.122.010	10	10,6	70	9,3	18	47	42	77	145	9	9	F 03/04	6 / 6	64
8.122.012	12	12,7	70	12,7	18	47	42	77	145	9	9	F 03/04	6 / 6	64
8.122.015	15	15	75	15,8	22	47	42	77	145	9	9	F 03/04	6 / 6	64
8.122.020	20	20	90	20,9	28	55	48,5	83	145	9	9	F 03/05	6 / 7	64
8.122.025	25	25	100	26,7	34	60	58,5	100	175	11	11	F 04/05	6 / 7	64
8.122.032	32	32	110	35,1	43	74	63	98	175	11	11	F 04/07	6 / 9	64
8.122.040	40	38	125	40,9	50	80	71	90	195	14	14	F 05/07	7 / 9	64
8.122.050	50	50	150	52,5	61	95	78	118	195	14	14	F 05/07	7 / 9	64
8.122.065	65	63,5	190	62,7	76	118	100	161	295	17	17	F 07/10	9 / 11	64
8.122.080	80	76	220	78	92	175	109	153	295	17	17	F 07/10	9 / 11	64
8.122.100	100	100	270	102,4	115	224	140	183	400	22	22	F 10	11	64