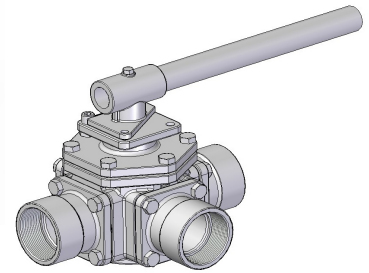


Stainless steel


TECHNICAL DATA

temperature range :	-20°C until max. +180°C, pressure dep.
pressure range :	max. PN 40 bar
connecting thread:	according to DIN 2999
actuator connection :	acc. ISO 5211
body material :	Stainless steel 1.4408
ball :	Stainless steel 1.4401
ball seals :	PTFE
stem:	Stainless steel 1.4401
stem seals :	PTFE / FKM
Security:	blow-out proofed stem, with anti-static device
Lever handle:	Stainless steel (DN15-DN50), Carbon steel (DN65-DN100),



DN65 - DN100

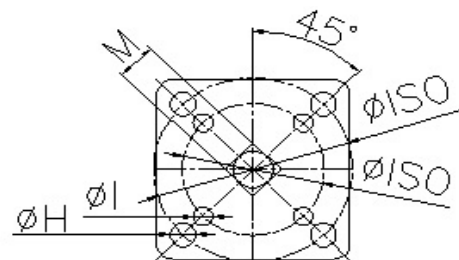
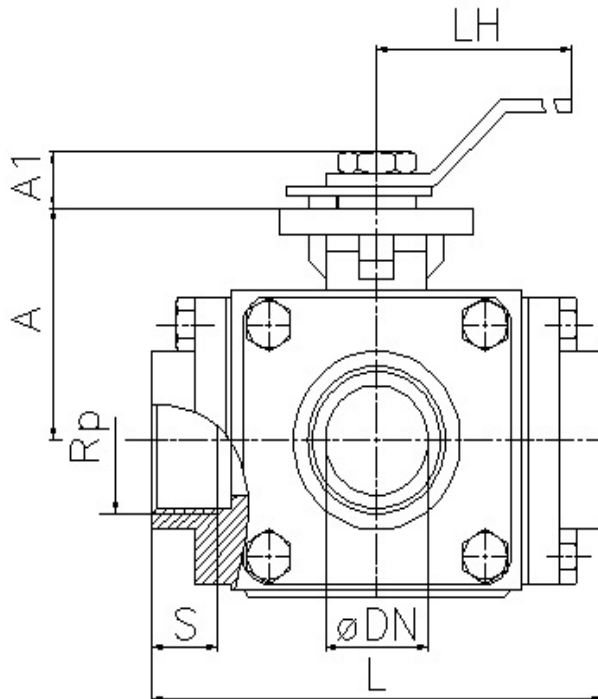
Ball-valve waist radial dismantled, 4-hole execution, or with X-Configuration on request

Also delivered in :  94/9/EG
ATEX

8.320 : T-port

8.325 : L-port

Female thread



Art. Nr.	Rp"	øDN	A mm	A1 mm	S mm	L mm	LH mm	øISO	øH mm	øl mm	M mm
8.320/325.015	1/2"	15	42	11	20	104	130	F 03/04	6	6	9
8.320/325.020	3/4"	20	49	14	19	111	165	F 04/05	7	6	11
8.320/325.025	1"	25	55	14	19,6	127	165	F 04/05	7	6	11
8.320/325.032	1 1/4"	32	63	17	24,5	138	205	F 05/07	9	7	14
8.320/325.040	1 1/2"	40	74	16	26	158	205	F 05/07	9	7	14
8.320/325.050	2"	50	93	21	25	190	325	F 07/10	11	9	17
8.320/325.065	2 1/2"	65	119	25	31,6	294	400	F 10	11	/	22
8.320/325.080	3"	80	137	25	33	317	500	F 10	11	/	22
8.320/325.100	4"	100	157	25	37	369	650	F 10	11	/	22